



Connecting the mountains to sea dots – Our Estuaries

Helen Kettles

Technical Advisor, Marine Ecosystems Team

DOC Estuarine Work Programme lead



0.35% area...
12.2% value



Over 400 estuarine systems



July 2012 – new
role in DOC
shared services



Our touchstones



Nov 2012 – Council coastal specialists meeting

April 2013 – Mountains to Sea Trust wānanga

August 2013 – Special session at NZMSS

August 2013 – DOC national
estuaries workshop

August 2013 – Council coastal specialists meeting

Oct 2014 – DOC operations hui

Nov 2013 – Oz NEN meeting

2014/2015 – User testers

April 2014 – Mountains to Sea Trust wānanga

'Our Estuaries'
Live – 2 Feb 2016





Estuaries

Estuaries are special places where rivers meet the sea. Each one is unique, ranging from small lagoons to extensive wetland harbour systems.

This 'Our Estuaries' website will help you explore our many estuaries with those monitoring and protecting them.

Contact us to get your estuary project added and we welcome your feedback.



University of Waikato
Department of Environment and Planning

We celebrate the collective work and connect people with each other and resources. There is something for everyone: tangata whenua, community groups, families, tourists and management agencies.

About estuaries



Estuaries are dynamic, rich ecosystems where freshwater mixes with the sea. Find out why they are important and some of the threats they face.

Experiencing estuaries map



Use this map to find out how to experience our estuaries virtually or in person through birdwatching, time-lapse, exploring mudflats and walks and other ways.

Monitoring estuaries map



Who are watching over 130 estuaries and recording what they see. Use this interactive map to explore information collected on their health by agencies and people like you.

Restoring estuaries map



Find out where agencies and communities are working together to enhance estuaries and how to get involved in projects protecting the places special to you.

Estuaries on social media

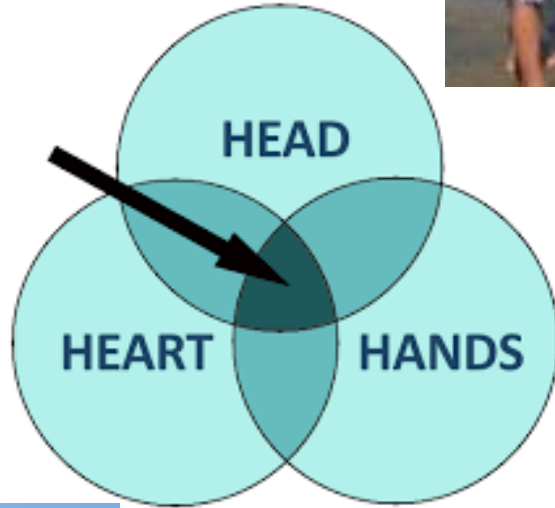


Feeling inspired by one of #OurEstuaries? Share your photos on social media and you may have your experiences featured here.

Find out more



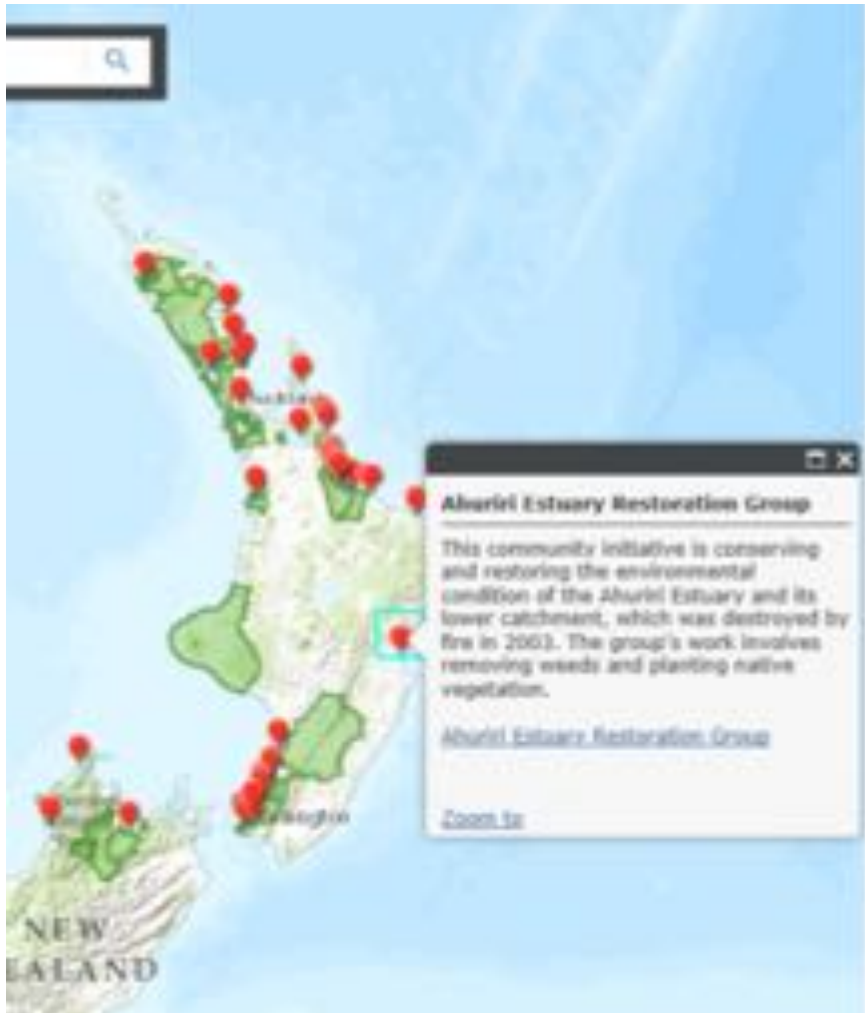
No project in your area? Want to learn what you can do from home? Want to find some useful and fun resources?



Photos: DOC and Patti Vanderburg



Restoring estuaries map

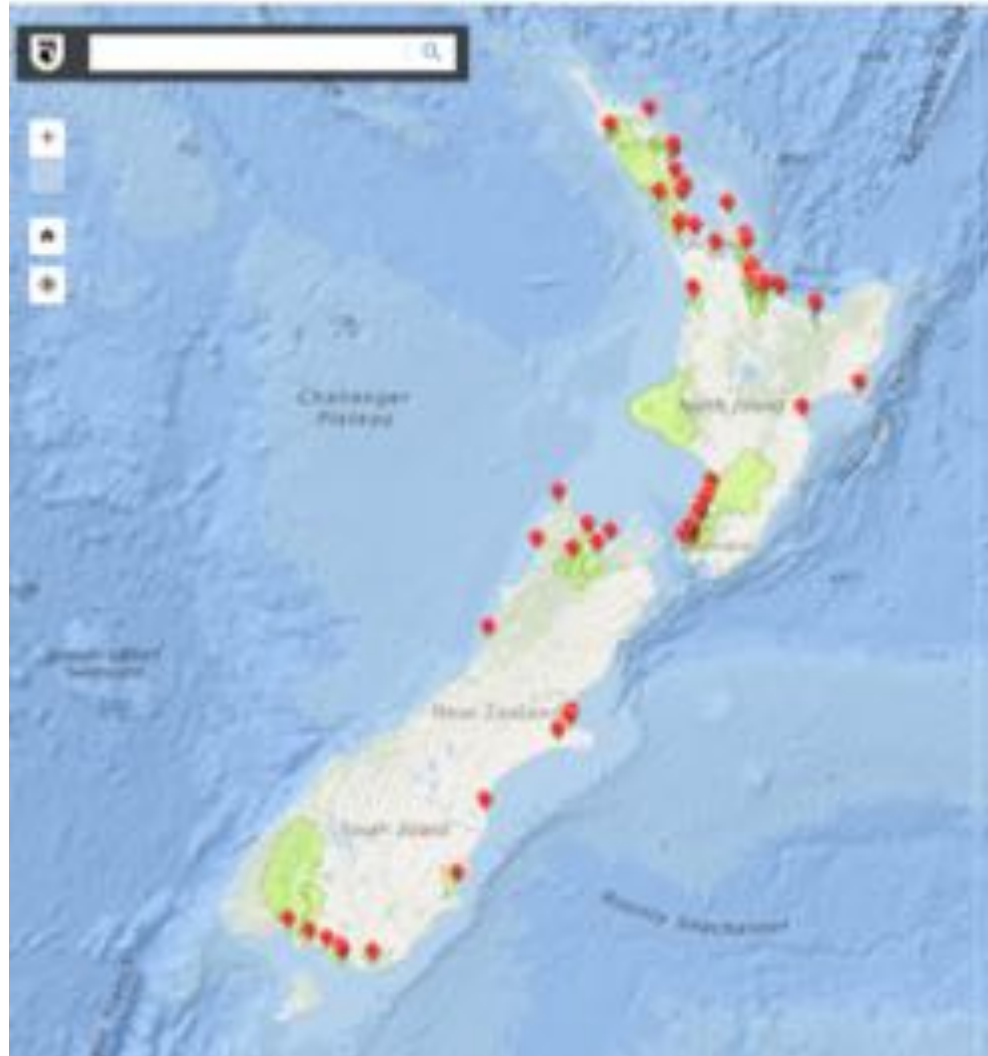


- 50 community groups restoring coastal wetland
- over 30 groups focusing on watersheds
- large multiagency processes
- communities

mountains to sea, ki uta ki tai

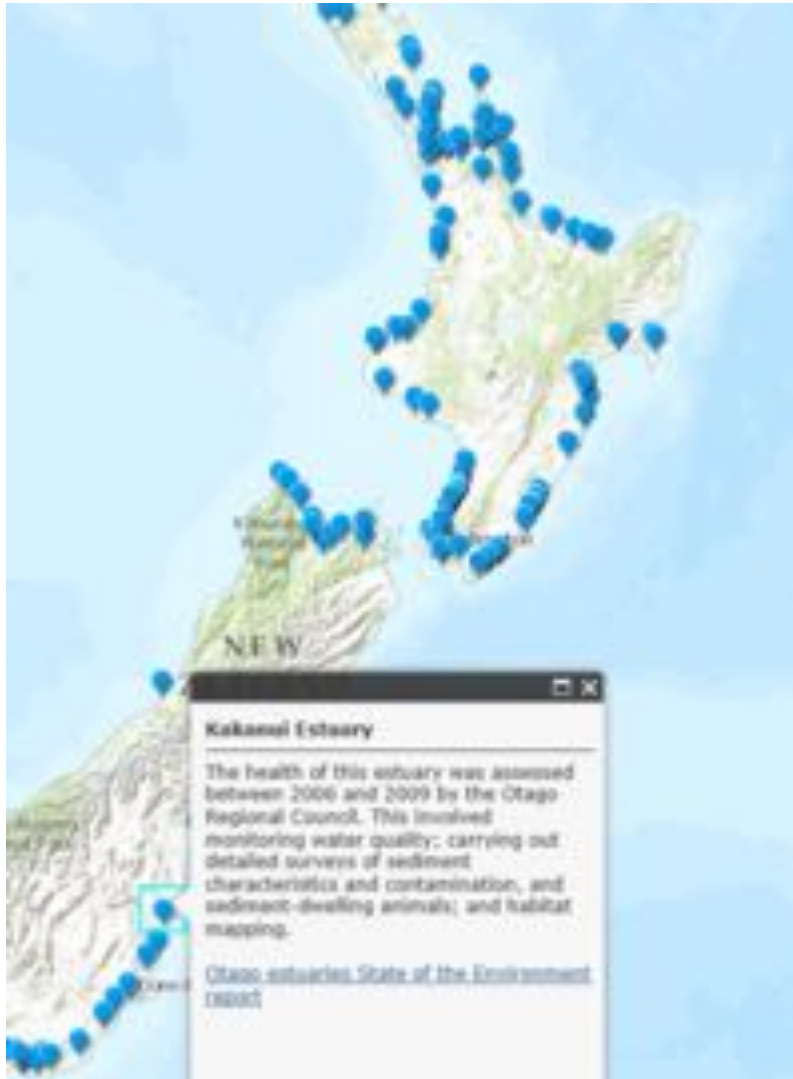
- 6 community groups
- 1 catchment

Freshwater Stretch Goal x 50





Monitoring estuaries map



150 Councils

4 mātauranga Maori

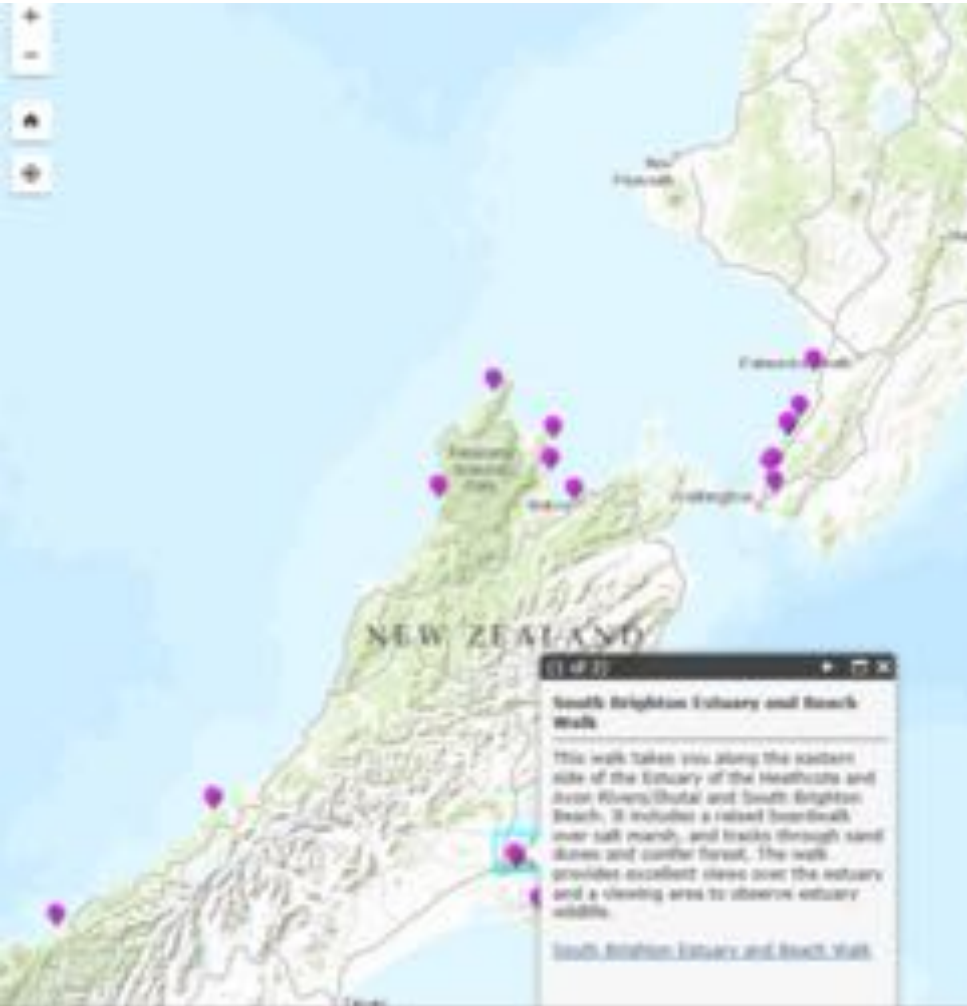
11 DOC

23 communities

- OSNZ wader bird surveys
- Fish and Game bird surveys
- NIWA community seagrass project
- 5 other reports, 1 new location



Experiencing estuaries



29 teacher resources and field guides

4 kayak trails

49 walks

3 mini documentary videos

- Samoan language video



Estuaries

Estuaries are special places where rivers meet the sea. Each one is unique, ranging from small lagoons to extensive wetland harbour systems.

This 'Our Estuaries' section will help you explore our many estuaries with those monitoring and protecting them.

Contact us to get your estuary project added and we welcome your feedback.

© University of Waikato

We celebrate the collective work and connect people with each other and resources. There is something for everyone: tangata whenua, community groups, families, teachers and management agencies.

About estuaries



Estuaries are dynamic, rich ecosystems where freshwater mixes with the sea. Find out why they are important and some of the threats they face.

Experiencing estuaries



Use this app to find out how to experience our estuaries virtually or in person through birdwatching, flows, measuring mudflats and walks and other ways.

Monitoring estuaries map



Over 100 estuaries are recording what they see. Use this interactive map to explore information collected on their health by agencies and people like you.

Restoring estuaries map



Find out where agencies and communities are working together to enhance estuaries and how to get involved in projects protecting the places special to you.

Estuaries on social media



Feeling inspired by one of #OurEstuaries? Share your photos on social media and we may have your experiences featured here.

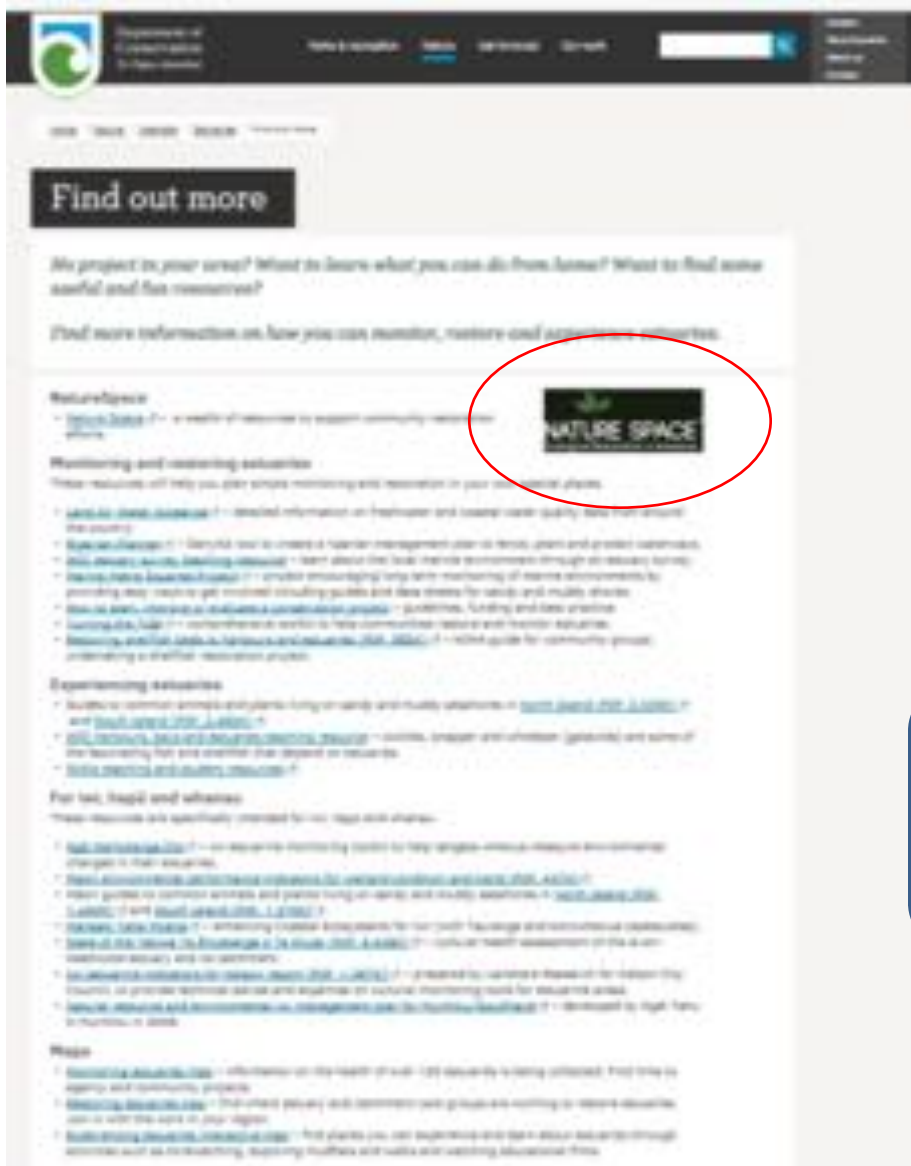
Find out more



No project in your area? Want to learn what you can do from home? Want to find some useful and fun resources?



Links to more resources



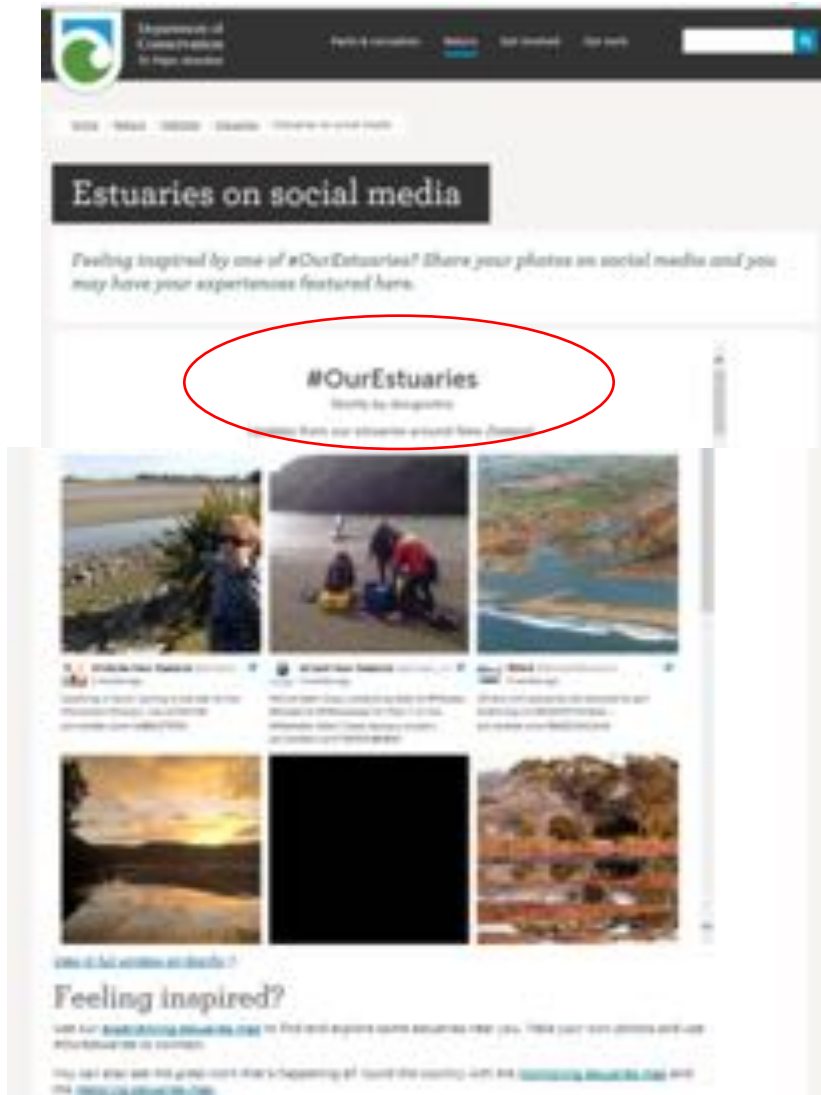
Best practice restoration, citizen science

Specific resources for iwi/hapū/whānau

Other information links e.g. LAWA, NZDairy riparian planner

- 2 Te Reo field guides
- Dairy NZ riparian management tool
- Interesting MBIE proposals
- Interest in mapping template

Social Media



77 posts currently displayed

Researchers, new resources, photos and videos, events

Captain Kettles in the Twittersphere

DOC vision, priorities, outcomes



From	→	To
DOC knows best	→	We trust others
Governing for citizens	→	Governing with citizens
DOC as service provider	→	DOC as service facilitator, collaborator, enabler, partner
Internally focused	→	Outwardly focused
DOC-only inputs and processes	→	DOC and citizens' own outcomes
Rigid process	→	Agility
Risk averse	→	Managed risk
Organisational silos	→	Organisational networks



Howse it going so far?

- Target audience those already restoring or interested in estuaries
 - Iwi, restoration groups, scientists and citizen scientists, sea kayakers, management agencies, teachers, families
- Approach
 - Poster and cards as resources.
 - People connecting is prime mode of communication

Discover
our **estuaries**

Department of Conservation
Tū Papatūākehu

Visit DOC's interactive web resource
www.doc.govt.nz/estuaries
#ourestuaries

A promotional poster for the 'Discover our estuaries' web resource. It features the DOC logo and the text 'Discover our estuaries' in blue and green. Below this, it says 'Visit DOC's interactive web resource' and provides the website URL 'www.doc.govt.nz/estuaries' and the hashtag '#ourestuaries'.

Experience
Monitor
Restore

Resources
Links to more information for
iwi community groups, experts, visitors,
teachers and children.

A poster titled 'Experience Monitor Restore'. It features a map of New Zealand with several cities marked: Auckland, Hamilton, Wellington, Christchurch, Dunedin, and Invercargill. There are two circular inset images: one showing a group of people and another showing a computer screen displaying a website. The text 'Resources' is in green, and the rest is in blue. Below the map, it says 'Links to more information for iwi community groups, experts, visitors, teachers and children.'

Some connecting 'data'



- Social media
 - Day 1 – 324
 - Week 1 – 524
 - 2 months – 1,024
- Emailing networks – Nelson gone off with a bang
- The Warsaw connection
- Linked back to hub from other websites





Citizen Science

Welcome!

to **Nature Watch NZ**, where you can **record** what you see in nature, **meet** other nature watchers, and **learn** about the natural world.

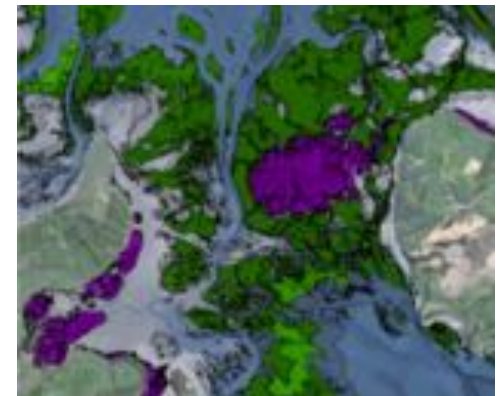
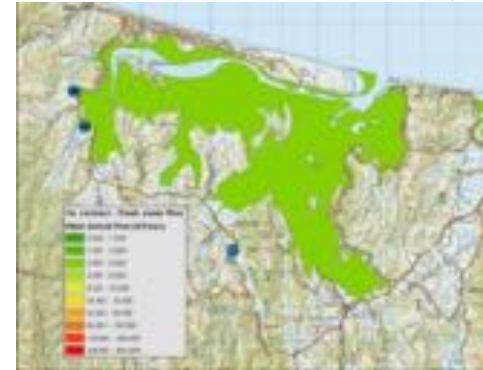


- Straw bales to locate inanga spawning sites (with Uni of Canterbury)
- SeagrassWatch
- Ecological weeds



GIS Portal

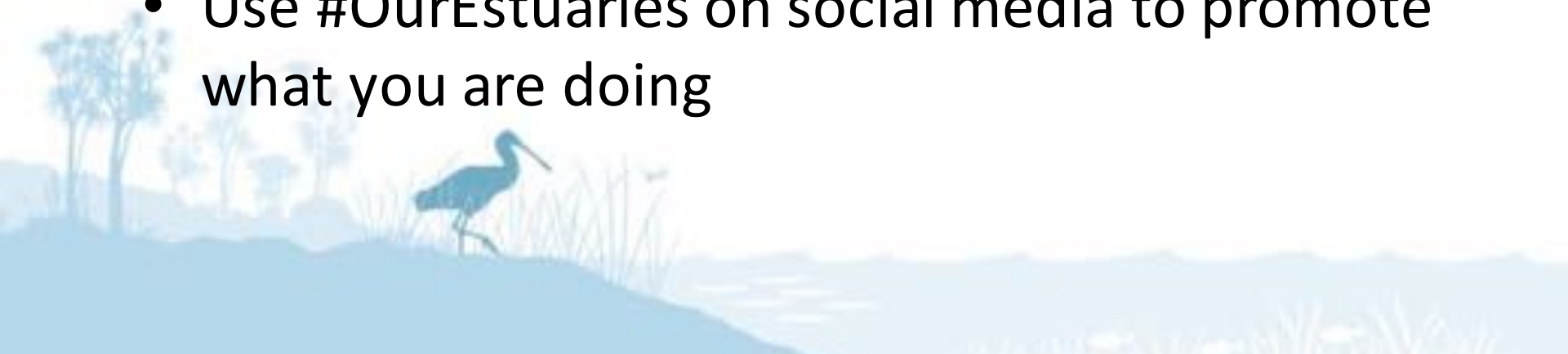
- Existing and developing e.g.
 - Inanga spawning sites (updating with Uni Canterbury)
 - Spatial extent and types (new with NIWA, MfE and Uni of Canterbury).
 - Depth and freshwater flow
 - Estuarine protected areas (new layer)
 - Catchment landuse and riparian cover through time (updating)
 - Estuarine habitats e.g. seagrass, mangroves, saltmarsh (new with Councils)
 - Sealevel rise projections (new with LINZ)





Improving connectivity – you can help

- Explore “Our Estuaries” with questions in mind and give feedback
- Share with networks around the country
- Provide a link on your webpages back to the hub
- Hand out pocket cards at events
- Display posters
- Use #OurEstuaries on social media to promote what you are doing





Take home messages - 1

- Estuaries have high values and they are under pressure
- Our Estuaries is an important part of DOC's Freshwater Stretch Goal as it is about “mountains to sea”
- DOC is providing a national leadership role for estuaries and it is strongly aligned with our emphasis on partnerships





Take home messages - 2

- There is an enthusiastic community involved in estuaries restoration
- Our Estuaries is an interesting new approach to support a community of interest
- It is a live hub and it will be exciting to see how it, and the work it represents, grows over time





Kia ora

- Coastal Special Interest Group (SIG)
- Mountains to Sea trust wananga participants April 2013 and 2014!
- DOCees core team: Melissa Reid, Dion Fabbro, Peter Badalamenti, Sarah Wilcox, Kurt Sharpe
- Other DOCees - Simon Moore, Al Check, Rebecca Martin, Matt Barnett, David Moss, Mark Anderson, Peter Huggins, Anita Anderson, Andrew Wright, Trevor Stone, Tim Bailey, Don Neale, Leana Barriball, Vanessa Whiu, Chloe Barnes, Yang Gan, Laura Honey.
- All those sharing ideas since it went live on 2 February.

