

Save Astrolabe

Creating a “Basket in the Bay”

Marine Protection in the Bay of Plenty



Motiti Rohemoana Trust

Est. 2009

Trust Vision

Protect, Preserve and Provide

Biological, Ecological and Cultural legacy of the Motiti Rohemoana

The Rena grounding



The serious state of the Moana



Signs of Decline



Figure A3 Distribution of bottom trawl effort, Bay of Plenty 1999-2004

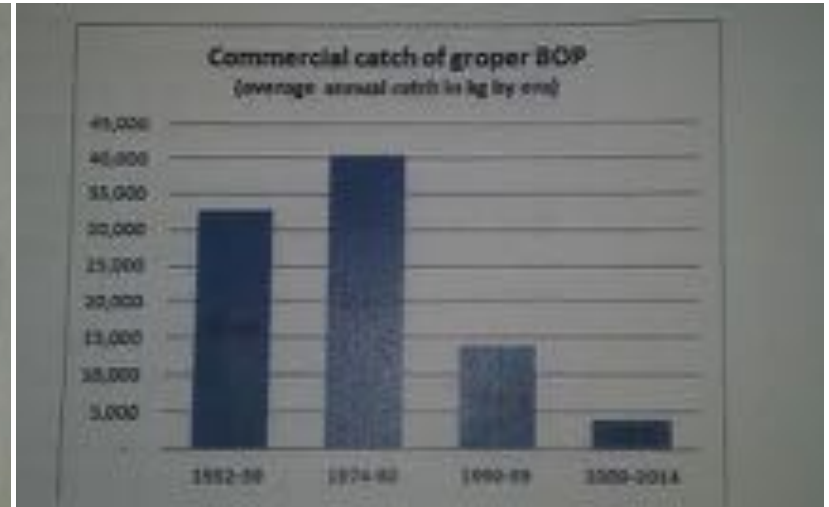
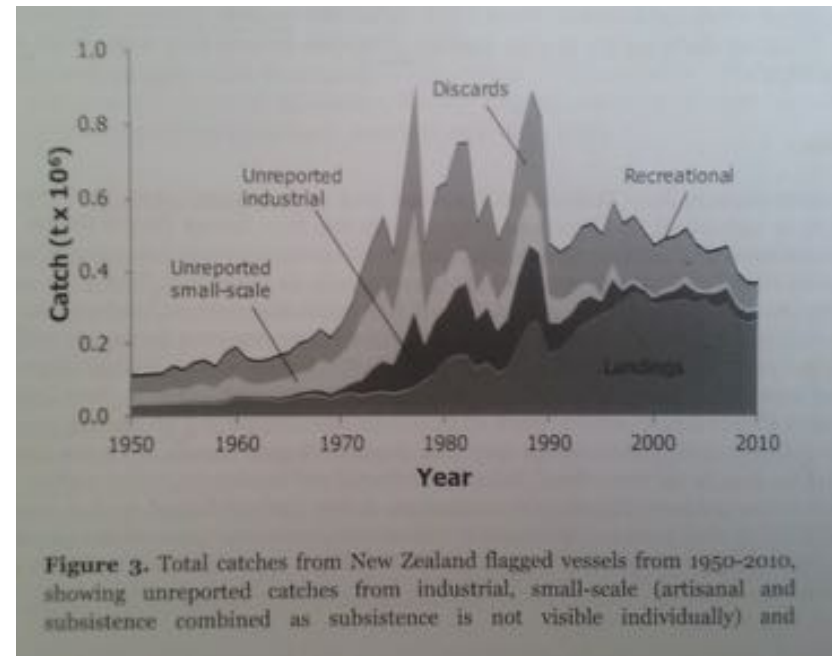
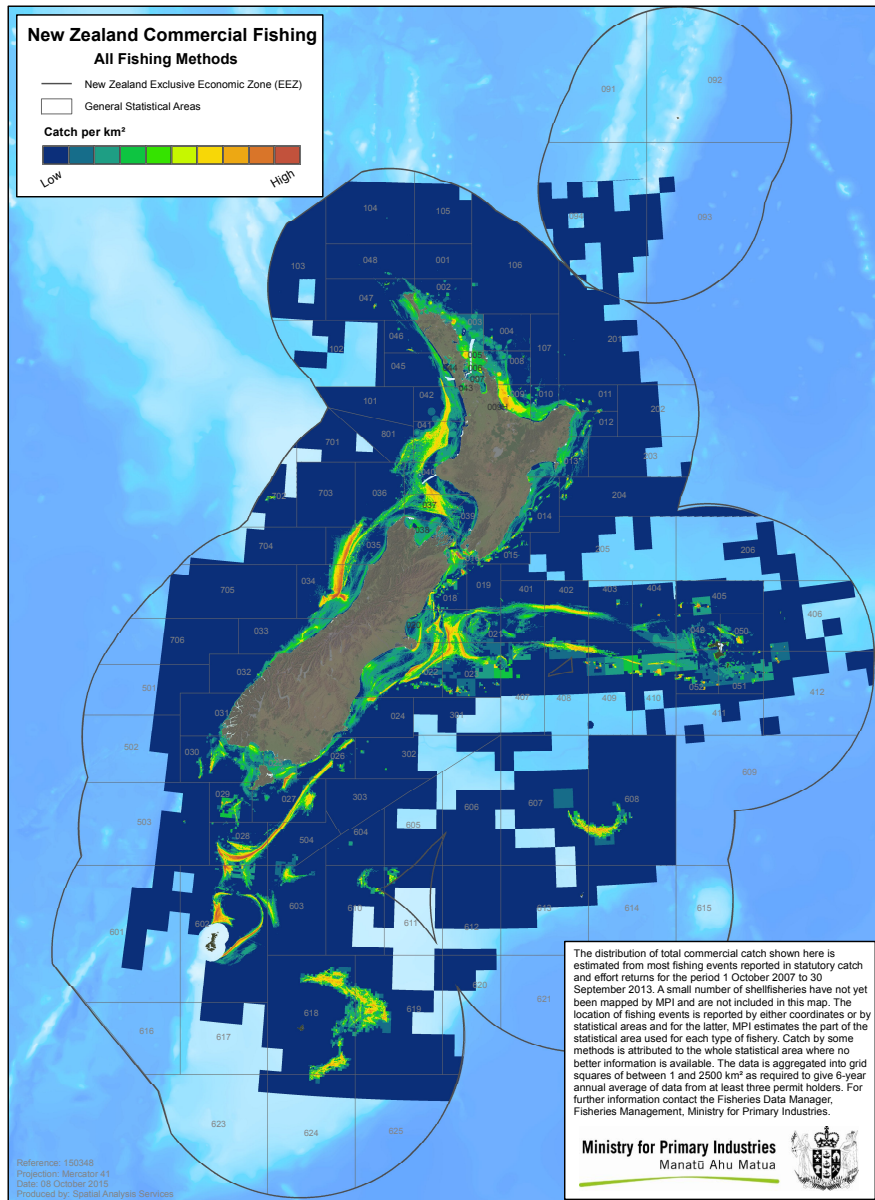


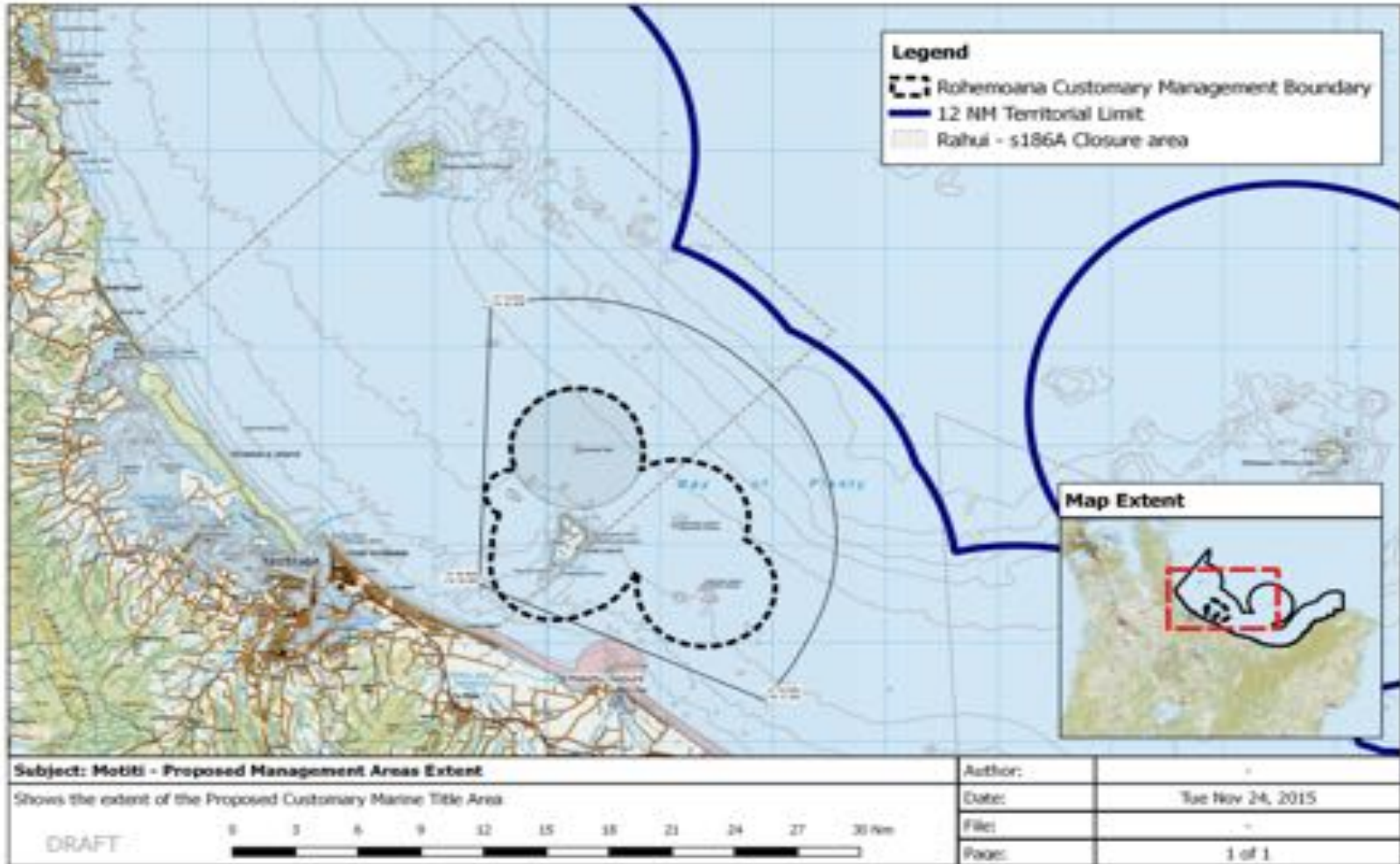
Figure B1. Groper (hapuku/bass) commercial landings at the Port of Tauranga (1930s & 1970s) and estimated catches from FSA009 (1990s onward) in the Bay of Plenty.

- Utilisation of the inshore coastal waters of the bay of plenty is extensive.
- Resulting in significant decline in Tonga Species.

National fisheries exploitation



Motiti Marine Spatial Planning Framework



Our Collective Legacy

Partnerships

- Building **effective** partnerships is difficult

- Having something to bring to the table
- Creating the collaborative approach
- Trust

Empathy and compassion

Envir Org	'Protection'
Maori Org	'Preservation'
Rec Fish	'Abundance'
Com Fish	'Sustainability'

Sharing a collective vision – Connection

"Think Globally, Act Locally"



MORE FISH, BIGGER FISH, MORE SEX



EVERYTHING YOU EVER WANTED TO KNOW ABOUT MARINE PROTECTED AREAS
(BUT WERE TOO AFRAID TO ASK)

Facebook: Save Astrolabe

Email: Rahui.rohemoana@gmail.com

#saveastrolabe

#basketinthebay

#fishforthefuture

#fishforeveryone



Forest & Bird
GIVING NATURE A VOICE

