



## Manaia River Restoration Project

Ko au ko te awa. Ko te awa ko ahau (I am the river, and the river is me)





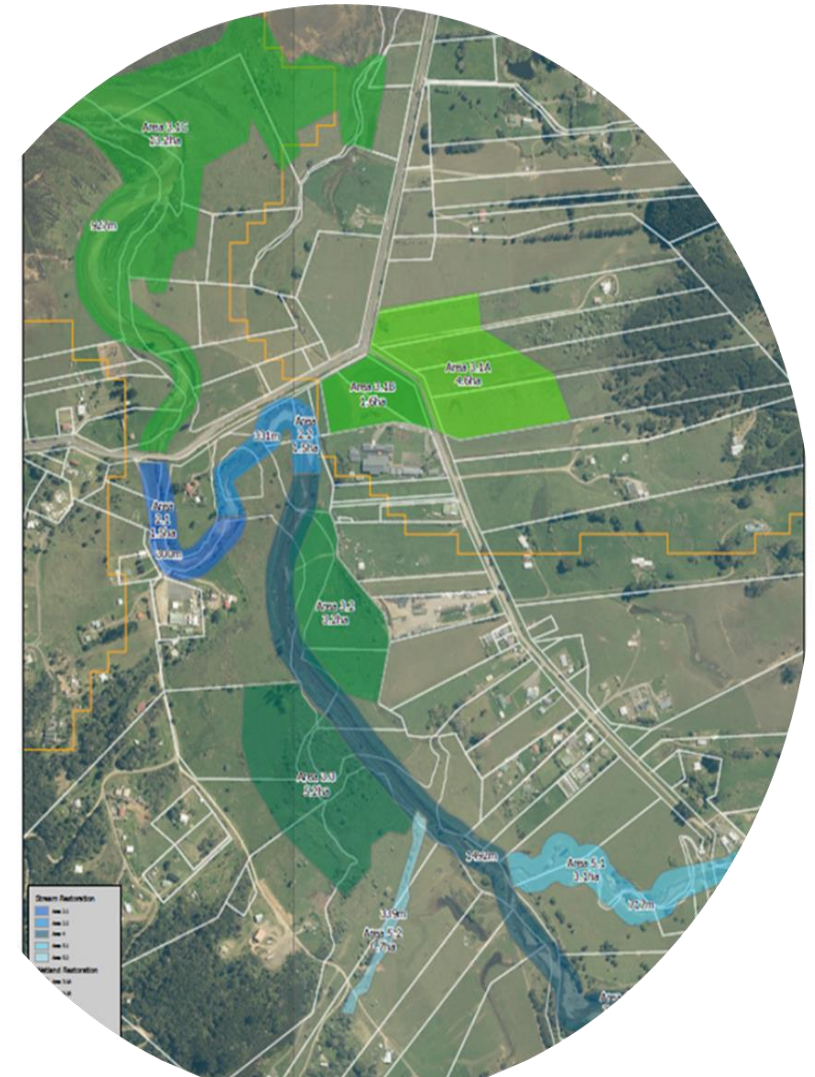




- In response to COVID-19, the Government called for ‘shovel ready’ infrastructure and environmental restoration projects to stimulate the construction and environmental industries and economy, be of public or regional benefit, and create jobs. The projects put forward had to be able to start immediately or within 12 months and run for between two and five years.
- A proposal was submitted to government with Manaia River Restoration Plan being picked up and funded by Te Uru Rakau (Ministry of Primary Industries), to be delivered over the reduced time of 3 years.
- Above proposal saw a combined funding agreement of \$1.155M for Manaia River Restoration Project
  - Funded by Te Uru Rakau of (MPI) through the “shovel ready’ government initiative
  - Further funded by the WRC Coromandel Zone Operational Fund
  - Led by our Iwi of Ngati Pukenga, Ngati Whanaunga, and supported by Marutuahu
  - Proudly supported by the Waikato Regional Council to direct and oversee the project work
  - Further supported by the Department of Conservation and the Thames Coromandel District Council.
  - In-kind contributions – Ngāti Pukenga, Ngaati Whanaunga and WRC

# Manaia River Restoration Project Objectives

- Plant 40,000 – 45,000 eco-sourced native trees (predominantly riparian and wetland species) across approximately 30ha.
- Create approximately 7,400m of fencing
- Create immediate jobs for 5.85 FTE for 3 years in the community
- Train a local workforce in fencing, planting, weed / pest control and vegetation management
- Support local businesses to contract services and supply materials
- Determine the value of establishing a local native plant nursery to supply the project



- The project Lead Team of Harry Mikaere (Ngāti Pukenga), Honey Renata (Ngaati Whanaunga) and Dean Allen (Waikato Regional Council) overseas the operations of the project and monitors the project progress.
- An operations team of haukainga and descendants of local Iwi have been trained to carry out the required tasks to reduce erosion, improve water quality and biodiversity and develop wetlands in partnership with the landowners and kaitiaki of the awa.
- Local businesses including fencers, arborists, pest control specialists, nurseries, contractors, machine operators and hardware supply stores will supply resources and assistance as needed.





## Manaia River Restoration Project Team

- Left to right
- David Hamon (Lead Hand)
- Trish Mikaere (Coordinator)
- Mike Theobald (River Management Officer)
- Richard Corban (Field Operator)
- Elaine Iddon (Catchment Management Officer)
- Winiata Forsman (Field Operator)
- Hautu Martin (Field Operator)

# Training programme

## Formal Training

- Chainsaw Operations
- Health and Safety
- St Johns First Aid
- Resource Management Act
- Electronic Fishing

## Field Trips & Visits

- Historic Site Walks
- Plant Classification & ID
- Moehau Environment Group
- Ngati Hauh Nursery
- Colville Nursery



## Onsite Training

- Health & Safety
- Fencing - ongoing
- Drone operations
- Rock Walls & Groins
- Willow Groins
- Electronic Fishing
- Traffic Management
- Gravel Management
- Consents
- Weed Control
- Pest Control
- IT systems
- Purchasing
- Planning
- Reporting
- The list goes on...





# What we have done

- Project Management Plan is complete
- First Community Hui (and now the 2nd) for the 3yr Plan
- Local workforce has been recruited
- Inductions and Initial training have taken place
- PPE, Tools & Materials have been issued
- Vehicle, storage and venue has been secured
- Accounts with local suppliers are set up
- Training Plan has been implemented
- Communications Plan is in place
- Pest and Predator Control Plan is being written
- Weed control undertaken
- Year 1 Works Plan is rolling out
- Year 1 River Works are complete
- Met with Kura
- Met with Te Uru Rakau
- Have met with some whanau interested in nursery work (Ongoing)





## 2021 work programme

- Pest control for ngahere / awa
- Design / develop wetlands
- Project Branding
- Planting Days
- Field Day
- Determine community desire for a nursery
- Work with Te Wharekura o Manaia
- Water Quality Monitoring
- Volunteers utilized

